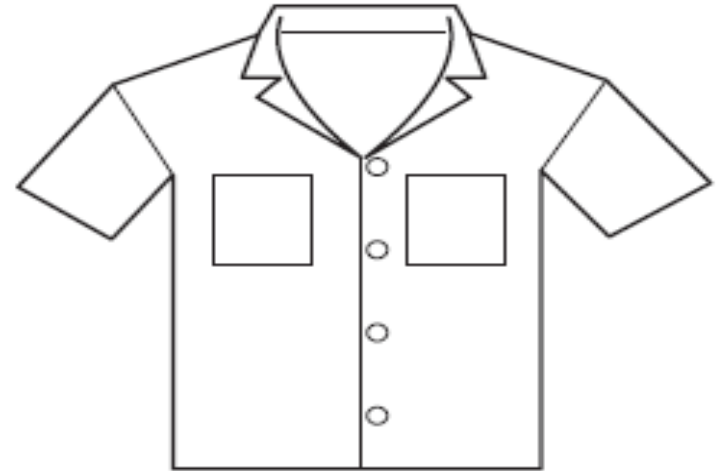


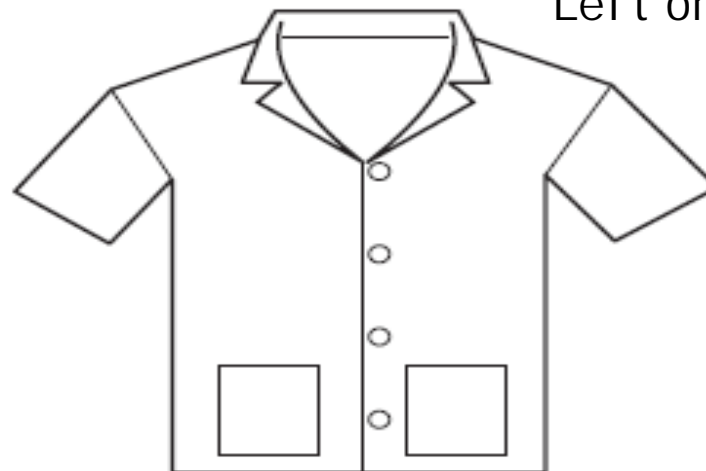
PJ Top – Short Sleeve



No pockets



Left or Right/ Both Breast pockets



Left & Right Hemline pockets

PJ Top – Long Sleeve



No pockets



Left or Right/ Both Breast pockets



Left & Right Hemline pockets

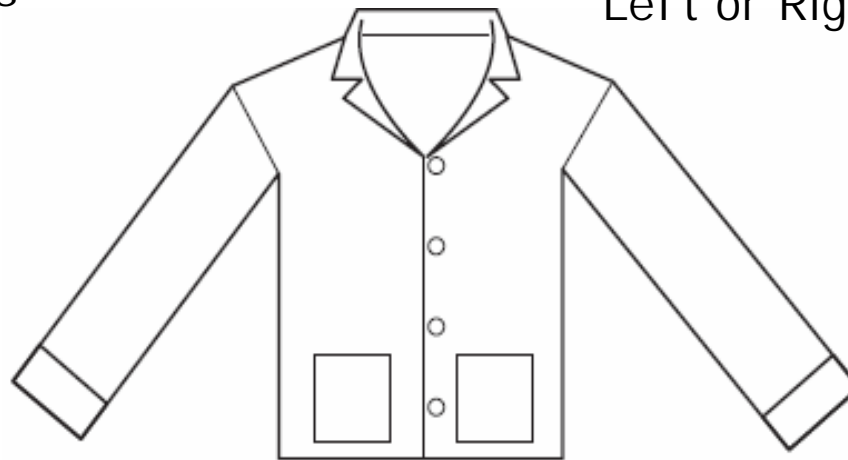
PJ Top – Long Sleeve with cuffs



No pockets



Left or Right/ Both Breast pockets



Left & Right Hemline pockets